



GM

Series Permanent Self-Cleaning Magnet

The Affordable Alternative in New Crushing Equipment

The GM Series of magnets combine the deep magnetic reach, durability and versatility of their manual-clean counterparts with the added convenience of self-cleaning. By adding a short conveyor belt around the permanent magnet, ferrous material is whisked from the magnet's surface and deposited in collection bins for easy disposal or reclaiming.

These permanent magnets utilize welded construction, heavy-duty material and superior magnetic materials to ensure their durability. The conveyor is constructed using structural channel frame, adjustable take-up, pillow block bearings, heavy-duty belt, construction duty motor and speed reducer to ensure longevity and smooth operation.

These units are ideal for separation of ferrous from nonferrous materials in situations where deep, high volume product flow contains numerous pieces of ferrous material.

Optional equipment is available for adapting these units to the strictest industrial mining and quarry settings. Examples of these options include but are not limited to explosion proof motors.





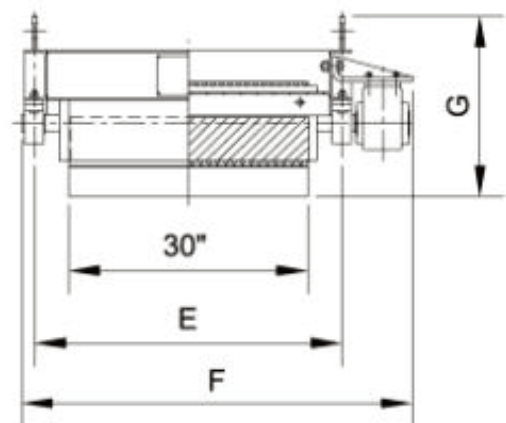
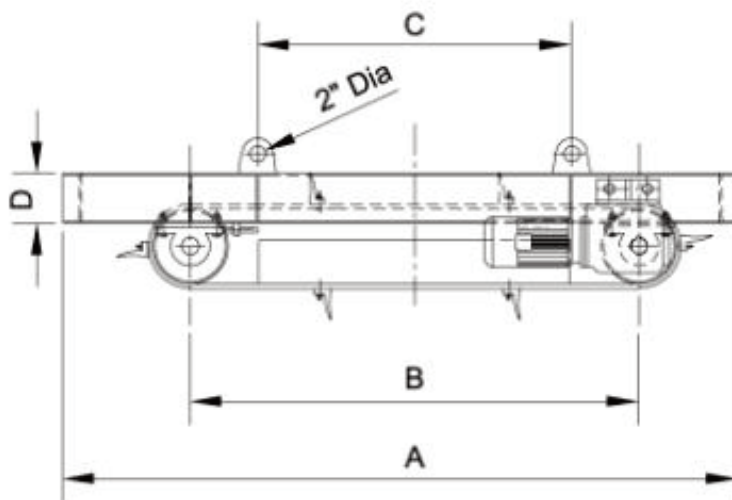
The Affordable Alternative in New Crushing Equipment

Specifications

Model	Belt Width	Working Gap	Motor Power HP	Weight LBS
GMB24 - 08B	24"	08"	2	1,658
GMB30 - 10B	30"	10"	3	1,990
GMB36 - 10B	36"	10"	3	2,030
GMB42 - 12B	42"	12"	5	2,700
GMB48 - 12B	48"	12"	5	2,750

Dimensions (Inches)

Model	A	B	C	D	E	F	G
GMB24 - 08B	72 7/16	44 1/8	31 1/2	6 5/16	38 9/16	49	22 11/16
GMB30 - 10B	79 1/2	51 3/16	39 3/8	6 5/16	38 9/16	49	22 11/16
GMB36 - 10B	84 5/8	56 5/16	39 3/8	6 5/16	38 9/16	49	22 11/16
GMB42 - 12B	96 7/16	64 9/16	43 5/16	7 1/16	38 9/16	49 3/16	25 3/16
GMB48 - 12B	104 5/16	72 7/16	51 3/16	7 1/16	38 9/16	49 3/16	25 3/16



Design & Specifications Subject to Change Without Notice